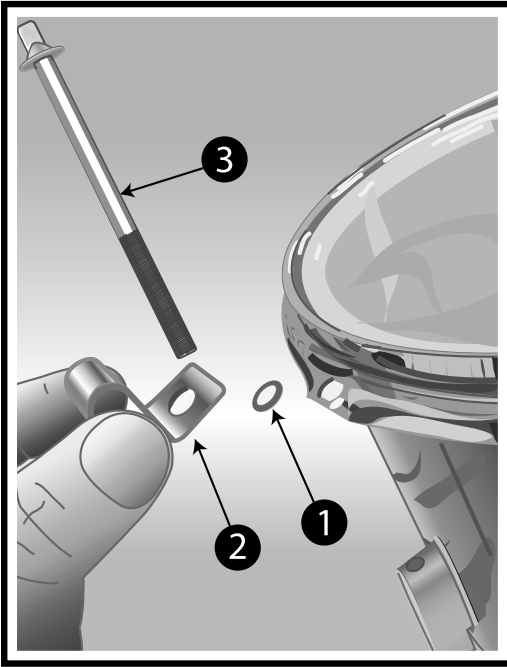




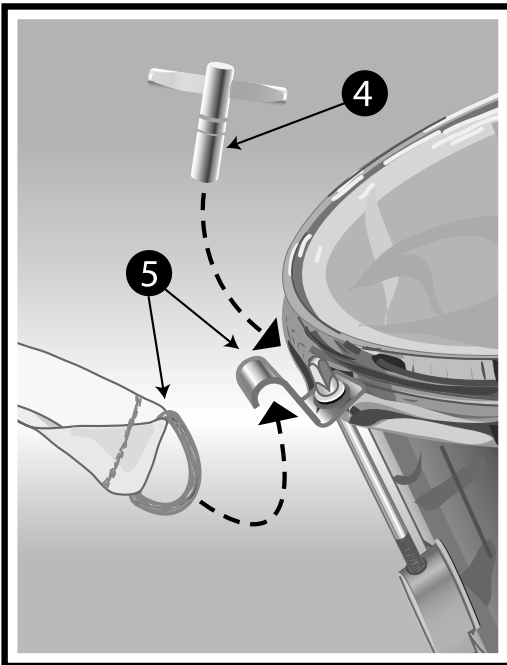
Instructions for Attaching Carry Strap to the Fun in a Drum Marching Drum



Step A. Loosen all tension rods and remove one of the tension rods (3) from the top rim by using the supplied drum-tuning key (4).

Step B. Place tension rod through washer (1) and carry strap hook (2) as shown.

Step C. With the washer and hook attached, put the tension rod back in its place. Use the tuning key to turn the tension rod to the proper pitch. Tightening the rod makes the pitch higher. Remember to keep the tension equal in each of the three rods.



Step D. Place carry strap ring (5) under carry strap hook and adjust strap length as needed.